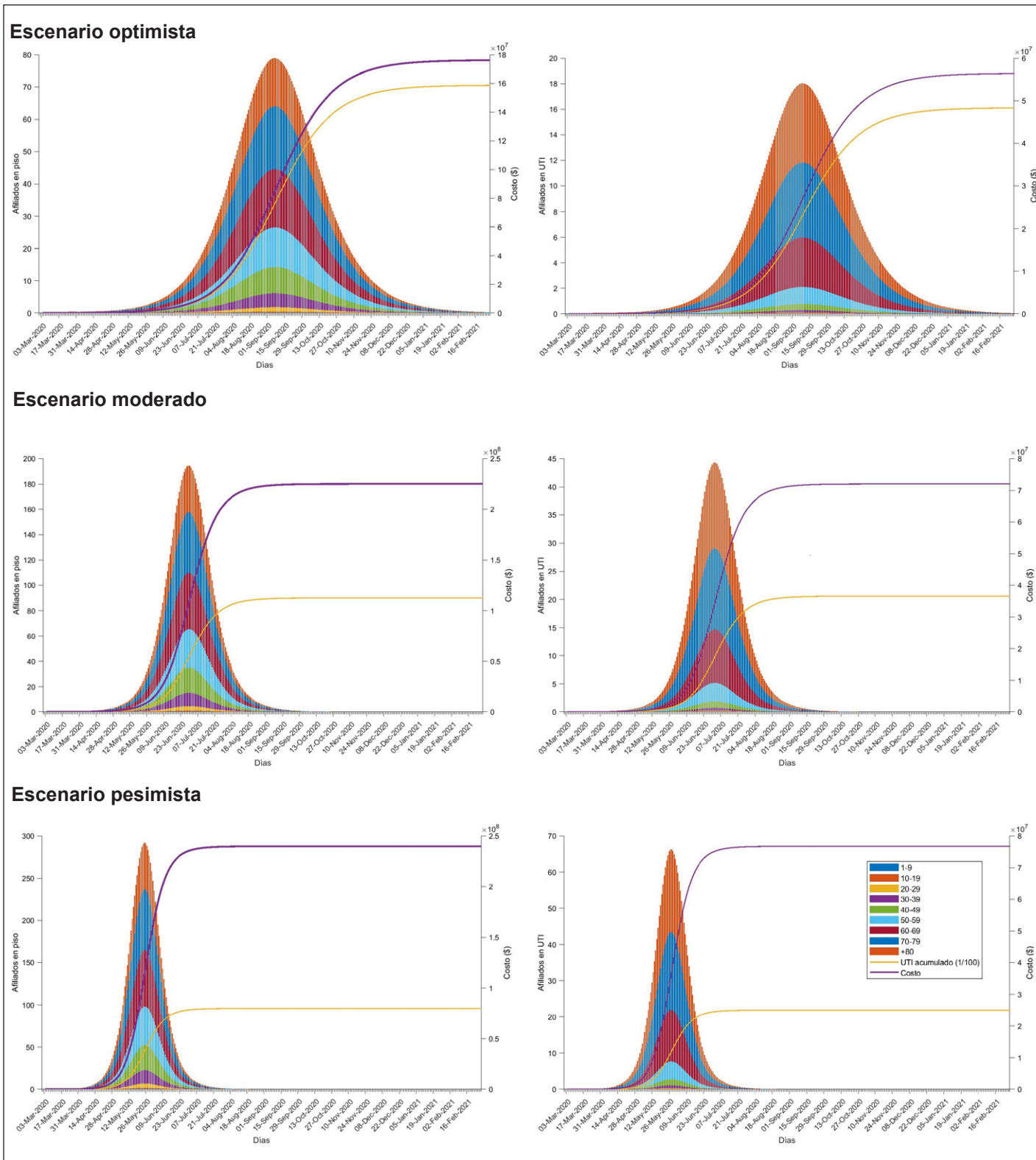


Anexo 1. Variación del R0 para los escenarios optimista, moderado y pesimista.



Anexo 2. Escenarios optimista, moderado y pesimista. Afiliados en piso y en UCI. UCI y costos acumulados.

**Bibliografía para Anexos**

- Zhang S, Diao M, Yu W, Pei L, Lin Z, Chen D. Estimation of the reproductive number of novel coronavirus (COVID-19) and the probable outbreak size on the Diamond Princess cruise ship: A data-driven analysis. *Int J Infect Dis* 93:201-204, 2020.
- Report of the WHO-China Joint Mission on Coronavirus Disease 2019 (COVID-19). Organización Mundial de la Salud (OMS). Febrero, 2020; Disponible en: <https://www.who.int/docs/default-source/coronaviruse/who-china-joint-mission-on-covid-19-final-report.pdf>
- Backer JA, Klinkenberg D, Wallinga J. Incubation period of 2019 novel coronavirus (2019-nCoV) infections among travellers from Wuhan, China, 20–28 January 2020. *Euro Surveill* 25(5):pii=2000062, 2020.
- Rocklöv J, Sjödin H, Wilder-Smith A. COVID-19 outbreak on the Diamond Princess cruise ship: estimating the epidemic potential and effectiveness of public health countermeasures. *J Travel Med* taaa030. Disponible en: <https://doi.org/10.1093/jtm/taaa030>